



**SUNSPACE**

**SUNROOMS  
& ENCLOSURES**

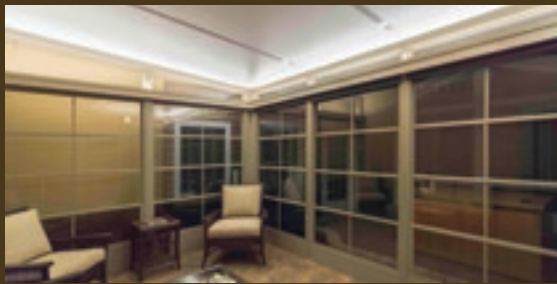


# WHY CHOOSE A SUNSPACE SUNROOM?

Sunspace Sunrooms are modular units that are custom designed for your home and manufactured in a temperature controlled environment, ensuring the highest quality. Our units can be installed directly onto an existing patio, deck, and even under a previously constructed roof!

Designed to extend your enjoyment of the outdoors without the usual annoyances of wind, rain, insects and harmful UV rays, Sunspace has the sunroom that's right for you and your family. Whether it's a children's playroom, a new addition to entertain, or simply a cozy place to relax, a new Sunspace Sunroom will add beauty, functionality and value to your home.

## ASK ABOUT OUR SUNLIGHT ILLUMINATED VALANCES



A hidden lighting system that is embedded into valance to provide indirect lighting. Based on the same light that comes from the sun, but with the ability to add a dimmer for ultimate control of your light. Whether soft light to read by, or entertaining with your guests, Sunlight by Sunspace is the perfect source!



Model 100 - Screen Room



Model 200 - WeatherMaster® Sunroom



Model 300 - 3-Season Sunroom



Model 400 - Insulated Sunroom



# MODEL 100 SCREEN ROOM

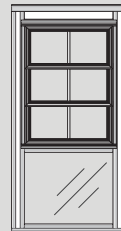
Get the most out of life while enjoying your Sunspace screen room. You create the design, and we'll build it to suit your needs. Your screen room will now become a great place to entertain company, family get-togethers or just to sit and relax without the bugs driving you inside.

Every region of the continent has its fair share of good and bad weather. With a Sunspace Sunroom, you can control the harsh conditions that might otherwise keep you inside. Over-exposure to sun, rain and wind can spoil an afternoon outside, but not anymore.

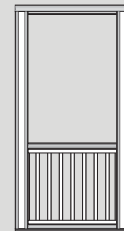
Sunspace Model 100 can easily be upgraded to Model 200 at any time!



## UPGRADE YOUR EXPERIENCE WITH OUR INTEGRATED RAILING SYSTEM!



Glass Kick Plate



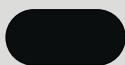
Integrated Railing

## AVAILABLE COLORS

Aluminum  
Standard



White



Black

Sunspace now has a new integrated railing system built from Structural Aluminum Alloy that is both aesthetically pleasing with no visible fasteners and can be attached to wood or concrete. Standard code compliant heights of 36" or 42" are available as well as custom heights, ideal for balcony applications. Choose an integrated railing system or a glass kick plate for added safety and beauty to match your custom design!



## THE BEST QUALITIES OF VIEWFLEX VINYL

- ViewFlex vinyl is virtually maintenance free
- ViewFlex vinyl glazing provides more safety and durability than glass
- ViewFlex vinyl is lightweight and easy to clean
- Energy efficient with better thermal conductivity than single pane glass
- Protection from the elements, insects and the sun's harmful UV rays
- Tints available in a variety of colors
- Backed by manufacturer factory warranty
- Over 40 years of time-tested durability

## AVAILABLE COLORS

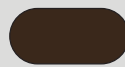
Aluminum Standard



White



Driftwood



Bronze



Black



Gray

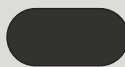
Vinyl Window Standard



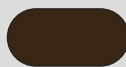
Clear



Smoke Gray



Dark gray



Bronze

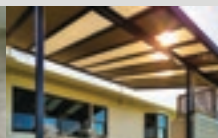
## ROOF OPTIONS



4" Insulated Roof



6" Insulated Roof



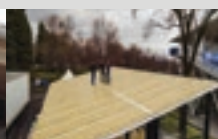
Hybrid Roof



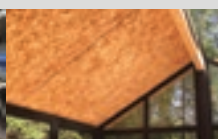
Acrylic Roof



8" SIP Roof Panel



6" SIP Roof Panel



4" SIP Roof Panel



8" ThermaDeck Panel





# MODEL 200 WEATHERMASTER SUNROOM

If you enjoy the open air feeling of your existing deck but want protection from the bugs, the elements and harmful UV rays, the Sunspace Model 200 is what you are looking for. Made with two inch foam panels and extrusions, the walls incorporate the versatile WeatherMaster® 4-Track Vinyl Window System. These window units slide up or down effortlessly allowing a generous 75% ventilation opening!

With a variety of wall and window frame colors to choose from you have the versatility to color match your new Sunroom with the existing exterior of your home or cottage. WeatherMaster® vinyl windows are made with durable ViewFlex glazed vinyl, and are available in 4 different tint colors: clear, smoke gray, dark gray and bronze.

## WHY CHOOSE WEATHERMASTER WINDOWS

- Provides up to 75% ventilation
- Infinitely adjustable, stack up, stack down, bunch up in the middle
- Perfect for under existing roof applications
- ViewFlex vinyl glazing is more durable than glass, time-tested for over 40 years
- Variety of tint colors to choose from
- Full fiberglass mesh screen
- Stylish & contemporary designs
- Adapts well with new construction
- Backed by manufacturer factory warranty



Single  
V4-Track



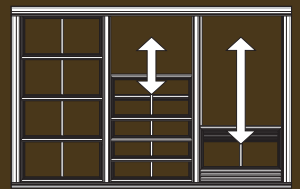
French Garden  
V4-Track Door



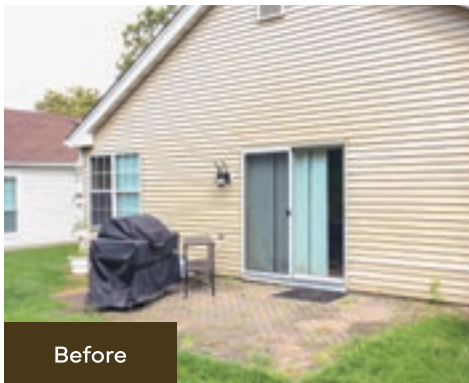
Single  
Window  
System



Stereo Double  
Window System



Stereo Triple  
Window System





# MODEL 300 3-SEASON SUNROOM

A 3 Season Sunroom by Sunspace is a bright addition to any house. Sunspace 2" extruded insulated aluminum pillars with single glazed glass gives the 3 Season Sunroom strength, stability and a virtually maintenance free exterior. Aluminum framed, double roller windows offering ventilation out of both sides of the window, with no fixed side as both sashes operate!

Roof systems available to meet your needs, whether it is for a cathedral ceiling or a contemporary studio pitch roof, over an existing deck or porch or perhaps even a carport.

## FEATURES AND BENEFITS

- Choose from 4" or 6" roof thicknesses
- Roof projection, snow load & R-Value are always considered in the customization of your roof system
- All systems constructed of high density foam core
- Laminated with aluminum skins on both sides or OSB
- Worry Free, Integrated, heavy-duty extruded aluminum gutters and fascia



## PATIO ROOM WALLS (MODEL 200-300)

For seasonal use the Sunspace Patio Room System is just right. High density 2" foam panels and heavy gauge 2" aluminum extrusions will make your favorite seasons last that much longer. Offering a wide selection of top quality door and window systems, this room is custom-designed to fit your needs.

## AVAILABLE COLORS

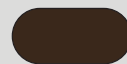
Aluminum Standard



White



Driftwood



Bronze



Black



Gray



# MODEL 400 INSULATED SUNROOM

## THERMAL ROOM WALLS

High density 3" foam walls keep this room warm and comfortable and the heavy gauge 3" aluminum extrusions offer strong support for wind and snow load. All extrusions have commercial grade thermal breaks reducing condensation and heat loss. All windows are high efficiency glass with Low-E Argon gas adding one more level of protection from the elements.

## THERMA-DECK A GOOD MATCH! IGNORING WHAT IS UNDER FOOT, NO LONGER.

Therma-Deck is a pre-manufactured floor deck that is both strong and insulated.

Available in 4-1/2" thick R19. 6-1/2" thick R28. 8-1/4" thick R35.

Panels consist of Engineered Oriented Strand Board sheets that sandwich the insulating core into a solid product. This eliminates costly Framing work and costly installation labour.

Having a finished surface, your Therma-Deck is ready to receive the finished flooring, such as, carpet, tile, laminates or hardwood. Due to the natural strength of Therma-Deck it is also used as a roofing product. Allowing for shingles on the exterior and a variety of interior ceiling finishes. As your dealer for more information on Therma-Deck products and applications.

## AVAILABLE COLORS

Aluminum  
Standard



White



Driftwood





Our service has been ranked amongst the best in the industry since 1991, with thousands of very satisfied customers who now enjoy their homes even more. By approaching every project with professionalism, craftsmanship, dependability and the highest levels of quality control, Sunspace and their Authorized Dealers ensure that your sunroom will be a worry free experience from start to finish.



**WEATHERMASTER**



**SUNSPACE**



**1.800.755.3365**

[sunspacesunrooms.com](http://sunspacesunrooms.com)

Sunspace reserves the right to change, modify, discontinue products and or features from time to time. Always confirm product availability with your local independent dealer.